



MINISTRY OF EDUCATION, SINGAPORE
in collaboration with
CAMBRIDGE ASSESSMENT INTERNATIONAL EDUCATION
General Certificate of Education Ordinary Level

GEOGRAPHY

2279/02

Paper 2

For examination from 2024

SPECIMEN INSERT

1 hour 45 minutes

READ THESE INSTRUCTIONS FIRST

This Insert contains additional resources referred to in the questions.

This document consists of **8** printed pages.



Singapore Examinations and Assessment Board



Cambridge Assessment
International Education

Fig. 1.1 for Question 1

Residents in a poor neighbourhood watching fireworks during the closing ceremony of the Rio Olympic Games in Brazil



Fig. 1.3 for Question 1
A rooftop garden in Rotterdam, the Netherlands

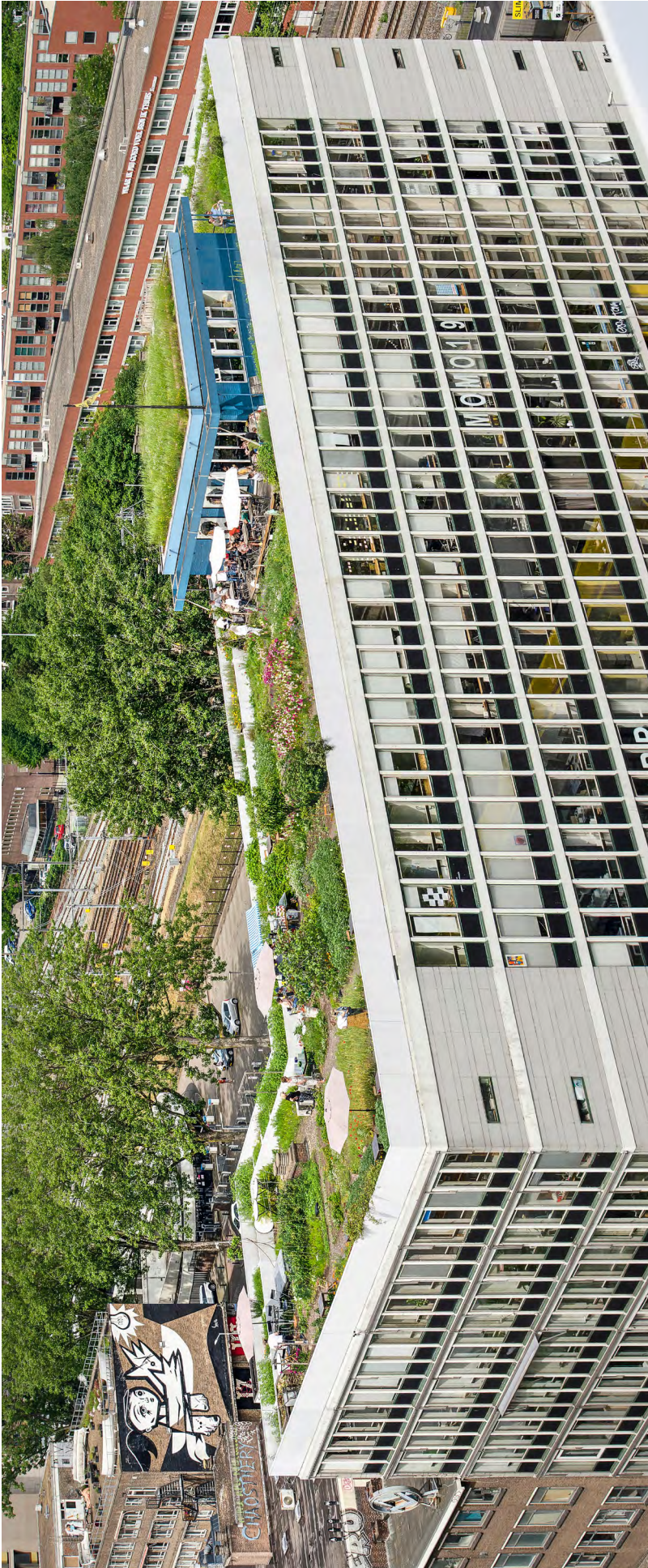


Fig. 2.2A for Question 2

Number of people made homeless as a result of earthquakes worldwide, 1960–2019

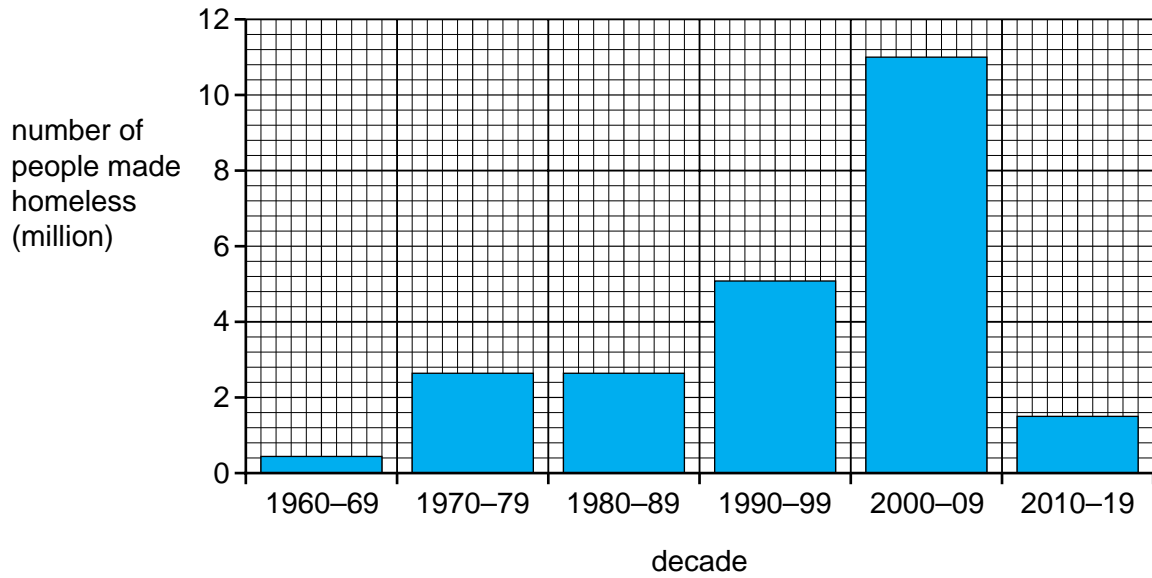


Fig. 2.2B for Question 2

Number of people injured as a result of earthquakes worldwide, 1960–2019

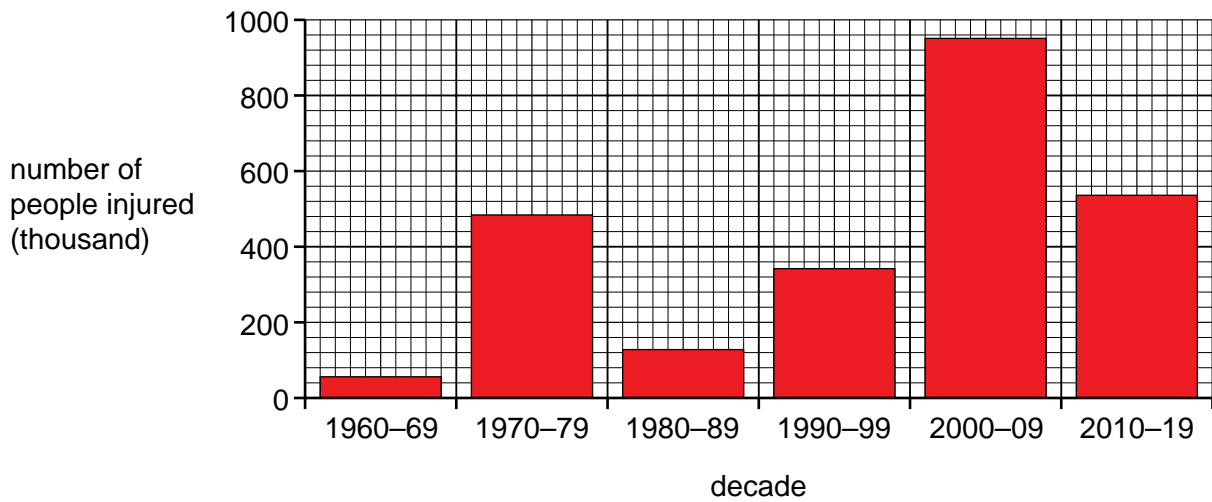


Fig. 2.3 for Question 2

Eruption of Mount Agung, Bali, Indonesia



Fig. 2.4 for Question 2

Rice paddies in front of Mount Agung, Bali, Indonesia



Fig. 3.1 for Question 3

Green hotel and office building in Singapore

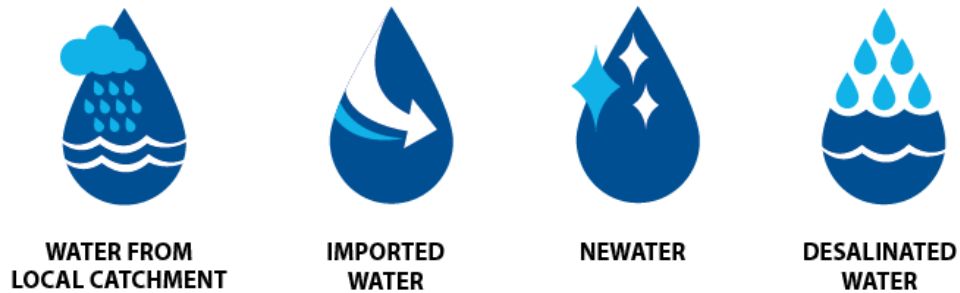


Fig. 3.2 for Question 3

NEWater and Desalination in Singapore

Singapore has a robust and diversified supply of water known as the 'Four National Taps'. As water demand continues to increase, NEWater and desalination will meet the majority of Singapore's future water demand by 2060.

The Four National Taps



NEWater is Singapore's third national tap. The NEWater process recycles treated used water into ultra-clean, high-grade recycled water.

Desalinated Water is Singapore's fourth water tap. The desalination process uses technology to make seawater drinkable.

NEWater and desalination plants

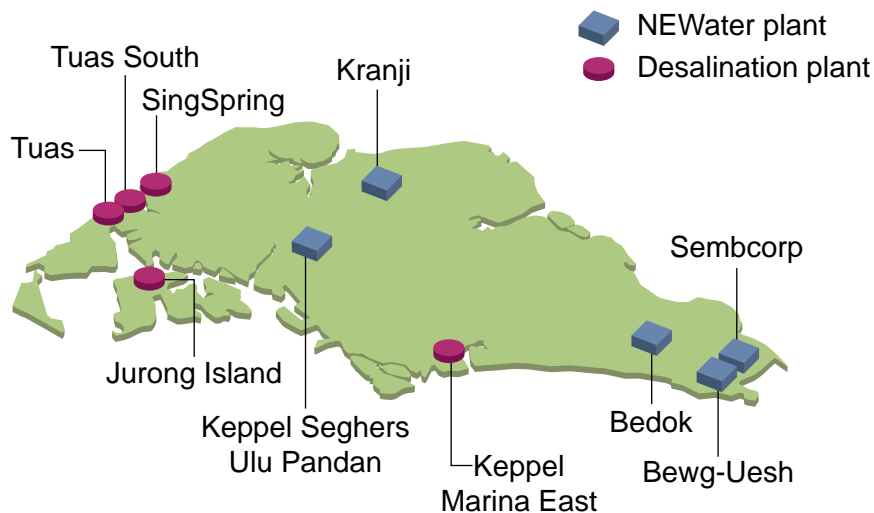
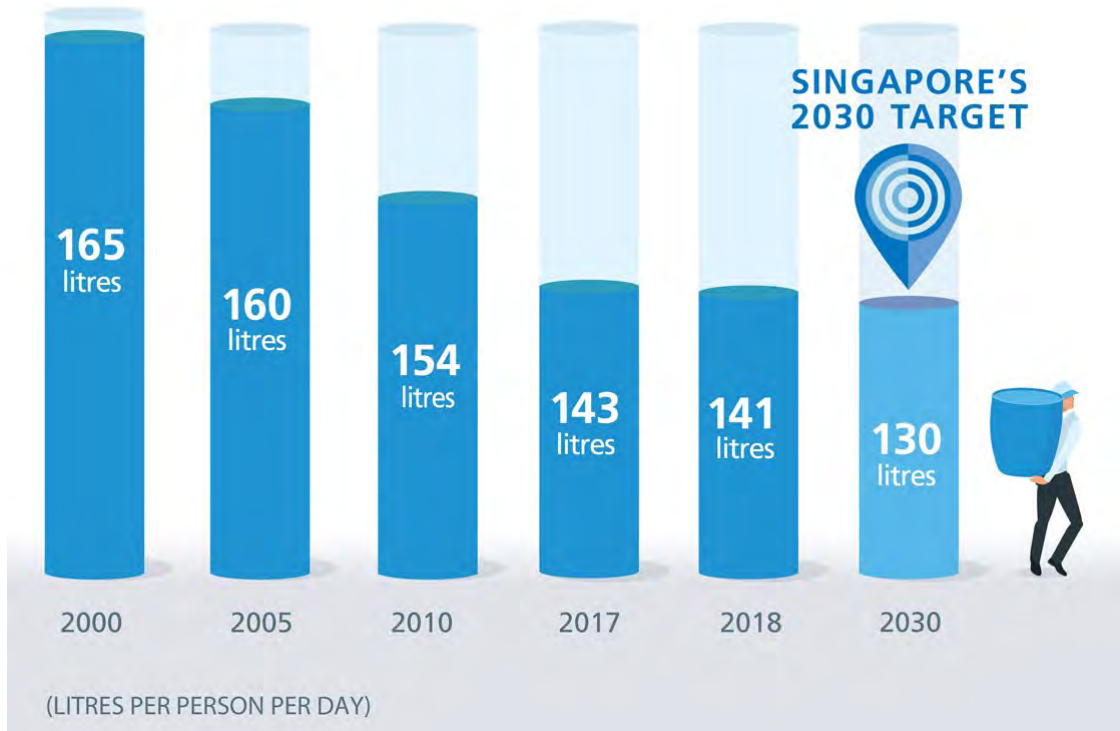


Fig. 3.3 for Question 3

Singapore's 2030 water consumption target



Copyright Acknowledgements:

- Question 1 Fig. 1.1 © Ref: 2EWGAJG; Sipa US / Alamy Stock Photo; *RIO DE JANEIRO, Aug. 7, 2016 (Xinhua) -- People watch fireworks exploding over the Maracana stadium in Manguera favela during the opening ceremony of the Rio 2016 Olympic Games in Rio de Janeiro, Brazil, Aug. 5, 2016; www.alamy.com*
- Question 1 Fig. 1.2 © Detailed analysis of fires attended by fire and rescue services in England. April 2019 to March 2020. UK Home Office. National Statistics; <https://www.gov.uk/government/statistics/detailed-analysis-of-fires-attended-by-fire-and-rescue-services-england-april-2019-to-march-2020/detailed-analysis-of-fires-attended-by-fire-and-rescue-services-england-april-2019-to-march-2020>; Open Government Licence v3.0 <https://www.nationalarchives.gov.uk/doc/open-government-licence/version/3/>
- Question 1 Fig. 1.3 © Ref: TRDHEB; Frans Blok / Alamy Stock Photo; *Rotterdam, The Netherlands, June 2, 2019: aerial view of the Dakakker, or Rooftop Field, urban agriculture on the roof of an office building from the 1960's; www.alamy.com*
- Question 2 Fig. 2.2A © <https://ourworldindata.org/natural-disasters>
- Question 2 Fig. 2.2B © <https://ourworldindata.org/natural-disasters>
- Question 2 Fig. 2.3 © Ref: 2CPE4BT; REUTERS / Alamy Stock Photo; *Mount Agung volcano can be seen erupting from Amed in Karangasem Regency, Bali, Indonesia June 29, 2018; www.alamy.com*
- Question 2 Fig. 2.4 © Ref: DDXTTD; Michele Falzone / Alamy Stock Photo; *Indonesia, Bali, Sidemen Valley, Rice Fields and Gunung Agung Volcano; www.alamy.com*
- Question 3 Fig. 3.1 © *Parkroyal on Pickering; https://chinatown.sg/stay/parkroyal-on-pickering/*
- Question 3 Fig. 3.2 © <https://www.pub.gov.sg/watersupply/fournationaltaps>
- Question 3 Fig. 3.2 © <https://www.gov.sg/features/every-drop-counts>
- Question 3 Fig. 3.3 © <https://www.pub.gov.sg/savewater>

Permission to reproduce items where third-party owned material protected by copyright is included has been sought and cleared where possible. Every reasonable effort has been made by the publisher (UCLES) to trace copyright holders, but if any items requiring clearance have unwittingly been included, the publisher will be pleased to make amends at the earliest possible opportunity.

Cambridge Assessment International Education is part of Cambridge Assessment. Cambridge Assessment is the brand name of the University of Cambridge Local Examinations Syndicate (UCLES), which is a department of the University of Cambridge.